

# TO LET

Ground Floor

2,150 sq.ft (200 sq.m)

15.4m  
footfall



## Phase 2 Unit 118, The Centre, Livingston, EH54 6HR

- Ground floor retail premises
- Opposite Hays Travel and Bodycare
- Other nearby retailers include Card Factory, Deichmann, Quiz and H&M

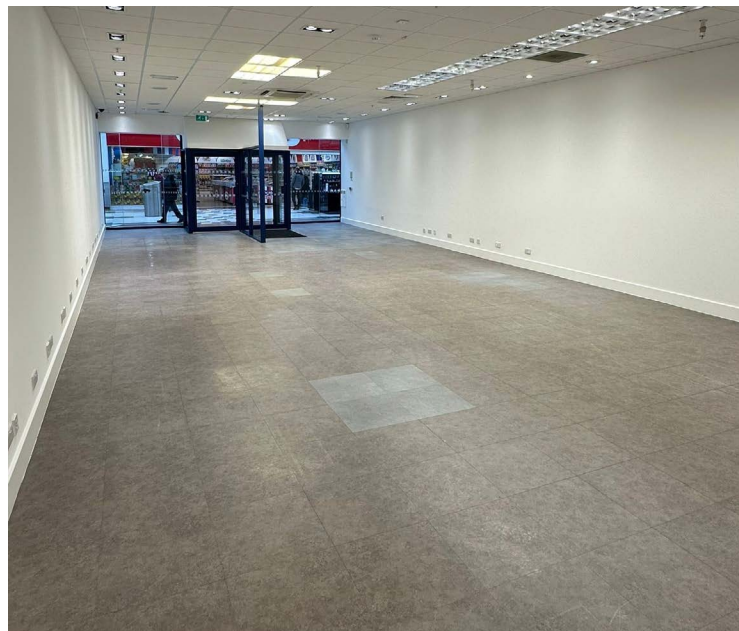
Areas (approx. NIA)	Sq.ft	Sq.m
Ground Floor	2,150	200
<b>TOTAL</b>	<b>2,150</b>	<b>200</b>

### Description

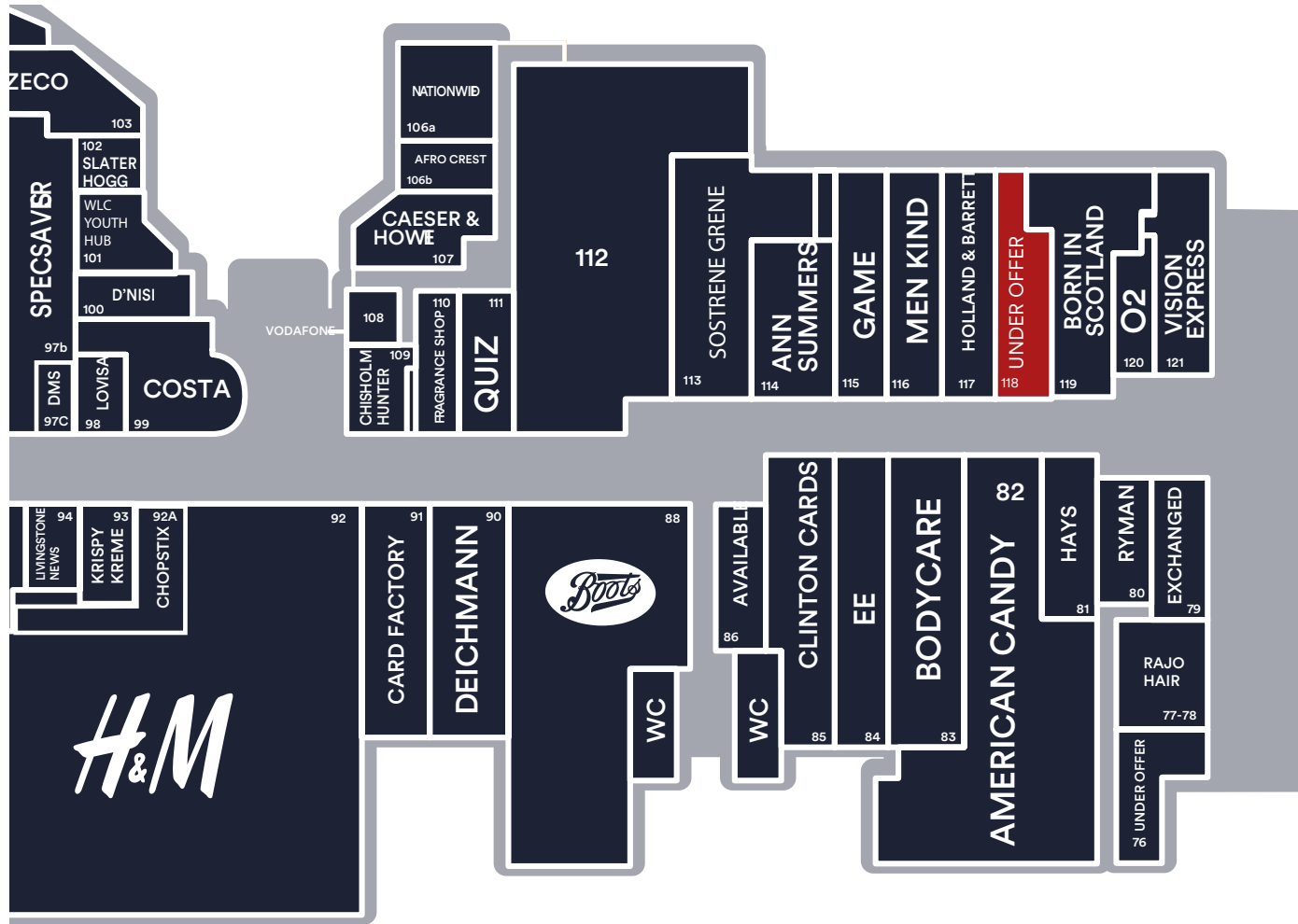
The Centre Livingston offers 7,200 car parking spaces. With key fashion anchors including Flannels, River Island, Primark, JD, M&S, H&M and Schuh. The Centre is the natural choice for the fashion-conscious shopper. This offer is bolstered by other popular retailers such as Boots, Superdrug and F&B outlets including Five Guys, Wagamama, Nando's, Subway and Greggs.

### Location

Approximately 14 miles west of Edinburgh and 35 miles east of Glasgow. Livingston has key transport links to both cities by way of a central bus terminal, two train stations and connections to Scotland's central road network.



## Phase 2 Site Plan



### Rent

£65,000 per annum.

### Rates

Rates Payable £34,063. Interested parties are advised to contact the local authority to confirm their liabilities and any transitional relief.

### Services

Electricity, water and drainage are connected to the property.

### Service Charge & Insurance

This unit participates in a service charge £26,959 per annum.

Insurance £1,519 per annum. The Landlord will insure the premises the premiums to be recovered from the tenant.

### Energy Performance

Further information available upon request.

### Planning

It is the incoming tenant's responsibility to verify that their intended use is acceptable to the Local Planning Authority.

### Legal Costs

Each party is responsible for their own legal costs in connection with the granting of a lease.

**Viewing** Strictly via prior appointment with the appointed agents:

**savills**  
savills.co.uk/retail  
**0131 247 3800**

**Stuart Moncur** 07887 795506  
Stuart.moncur@savills.com

**Charlie Hall** 07807 999693  
Charlie.hall@savills.com

**EYCO**  
0131 226 2641  
www.eyco.co.uk

**Alastair Rowe** 07747 747280  
arowe@eyco.co.uk

**Alexandra Campbell** 07425 335353  
acampbell@eyco.co.uk

**Ruari Hobkirk** 07507 689 448  
rhobkirk@eyco.co.uk

Owned and Managed by

**LCP**  
part of M Core

**01384 400123**

searchlcp.co.uk



**Rakesh Joshi** 07741 385322  
Rjoshi@lcpproperties.co.uk

**Simon Eatough** 07771 764148  
SEatough@lcpproperties.co.uk